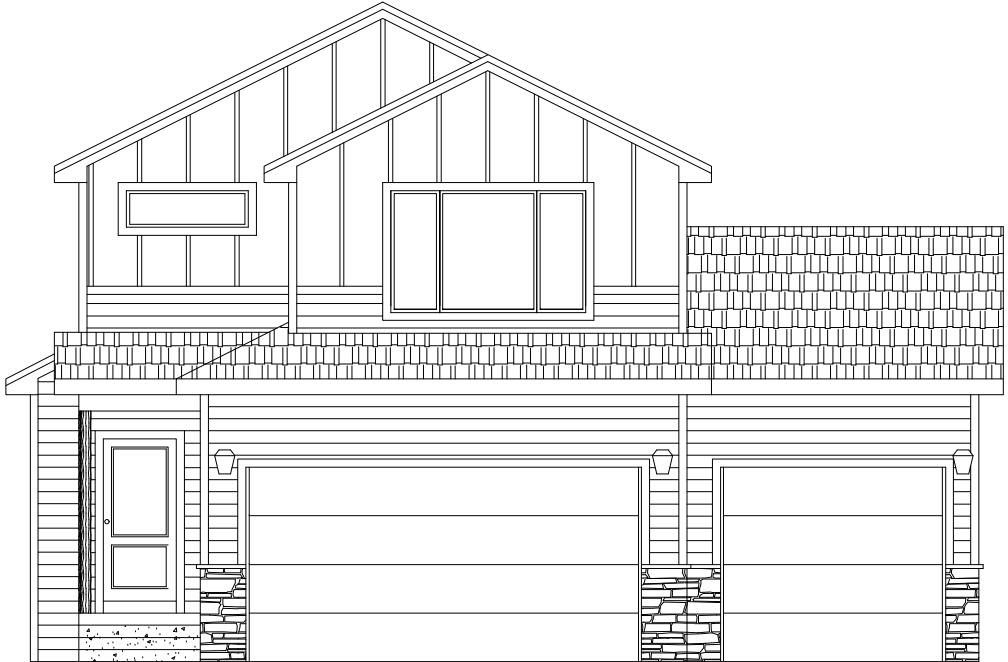
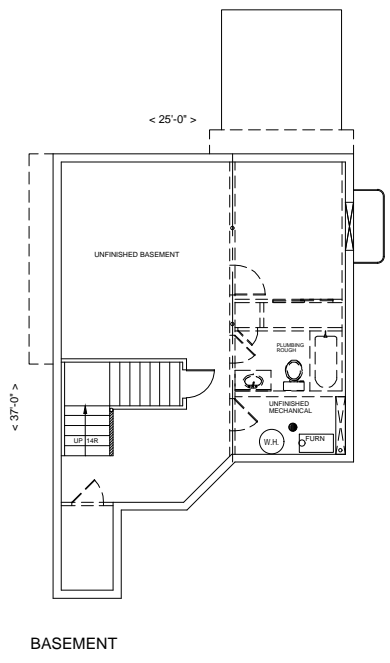
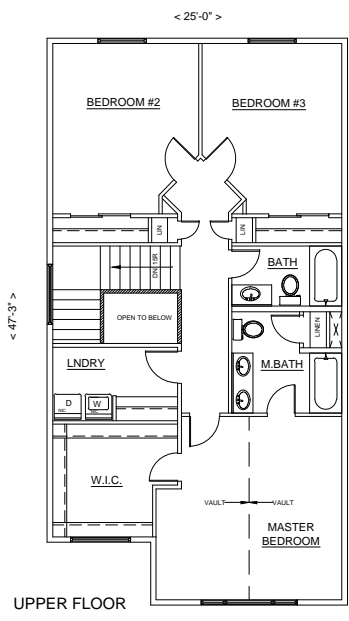
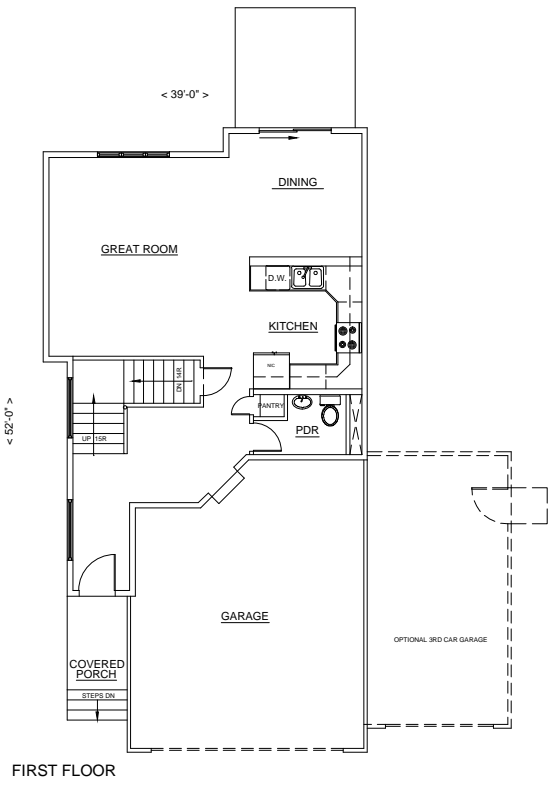


# THE BAILEY

Square Footage:  
 First Floor 795sf  
 Upper Floor 1136sf  
 Basement Floor 736sf  
 Total Living Area: 2667sf



FRONT ELEVATION W/ 3RD CAR OPTION



**TRI MOUNTAIN  
HOMES**

**SPEC HOME**  
 ADDRESS  
 LOT XX, BLOCK XX  
 SUBDIVISION

**THE BAILEY  
MODEL**  
 1931 SQFT  
 Two Story  
 Single Family Home

SHEET TITLE

**FLYER  
PAGE**

SCALE= VARIES

ISSUE: 01-12-21

REVISED: