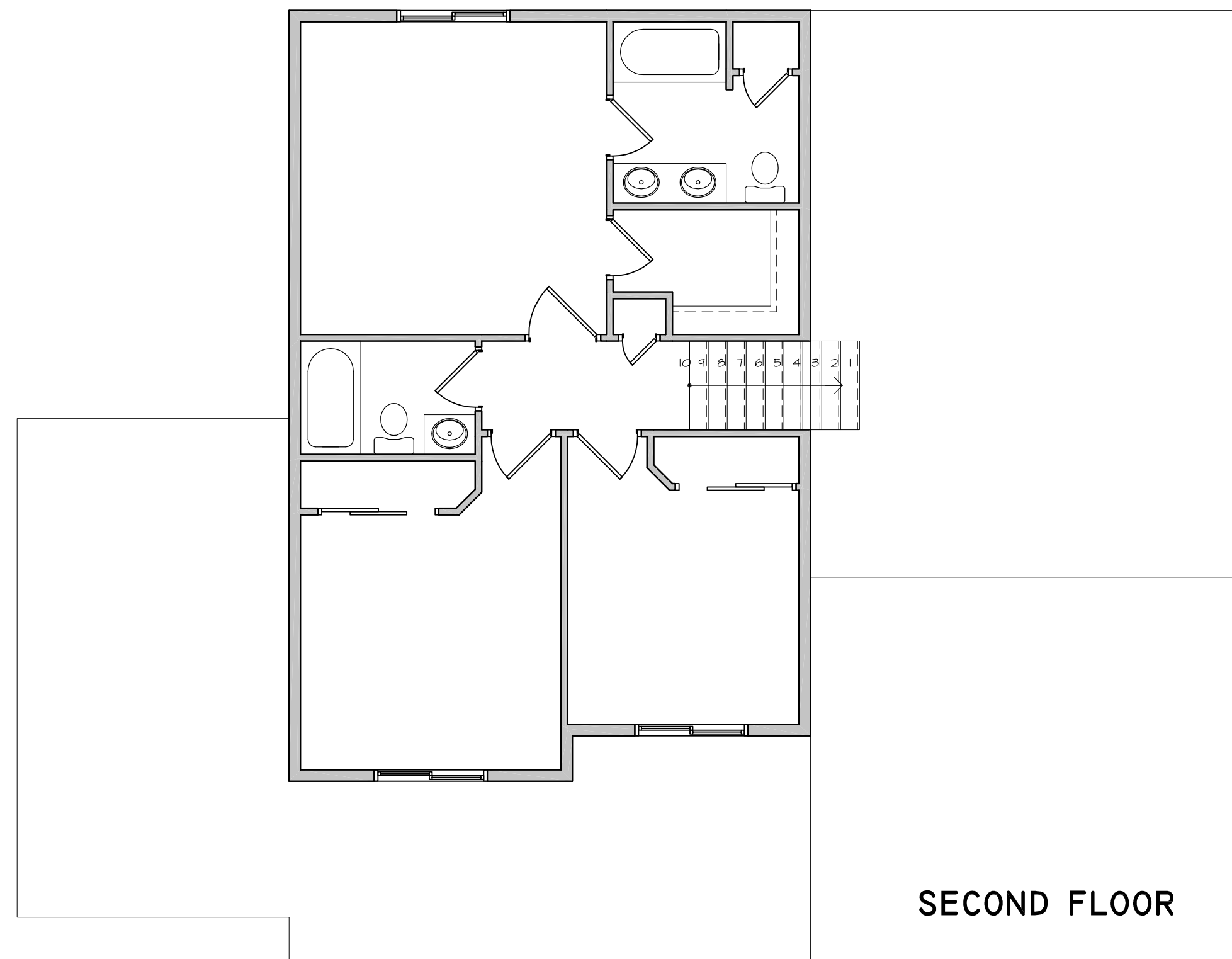
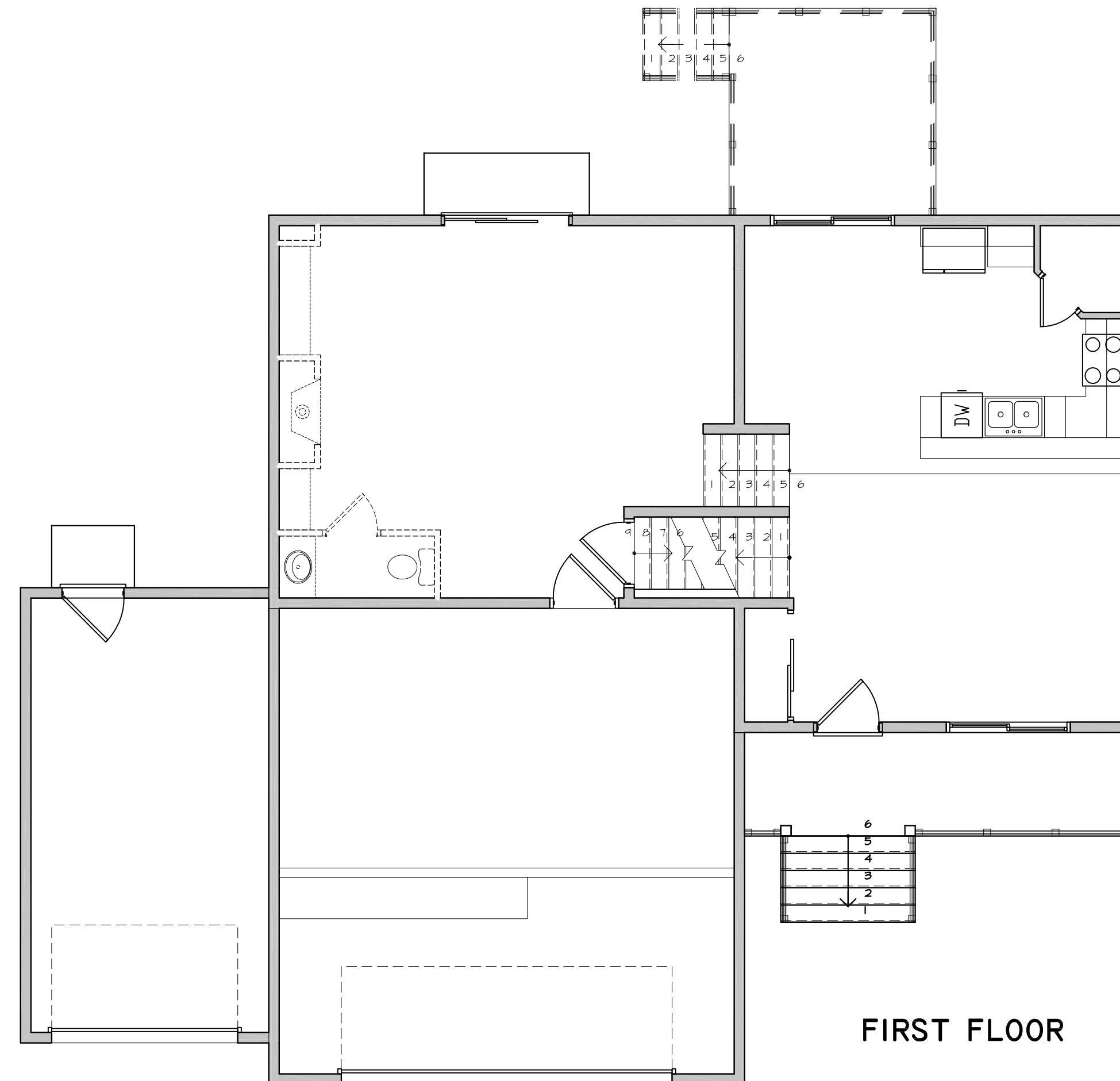


Jacqueline

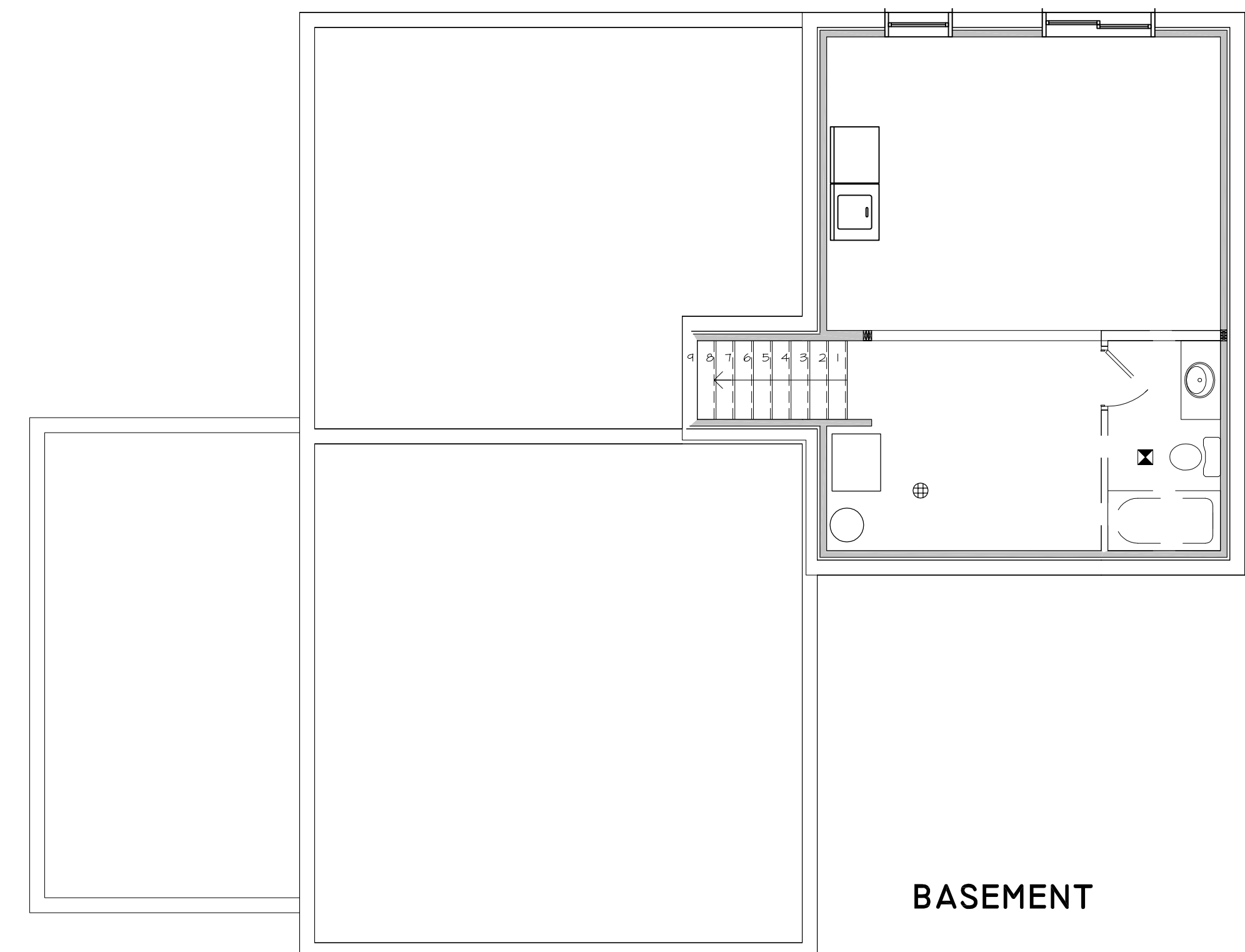
FIRST FLOOR = 915 SQ. FT.
 SECOND FLOOR = 740 SQ. FT.
 BASEMENT = 520 SQ. FT.
 TOTAL AREA = 2175 SQ. FT.



SECOND FLOOR



FIRST FLOOR



BASEMENT



GENERAL CONTRACTOR:
TRI MOUNTAIN HOMES
 JOHN ALT
 PO BOX 2207
 GILLETTE, WY 82717
 phone #: 307-670-8353
 PMPK@Trimountainhomes.com



Project No. _____
 Scale: 1" = 4'

Jacqueline
 GILLETTE, WY

Drawn by: J. Graves
 Date: 18 Jul 17
 Revised by: J. Graves
 Date: 10 Aug 17
 Date: 07 Sep 17

© 2017 IMPACT Drafting & Design, Inc.
 All rights reserved. All designs, drawings, plans, and written materials contained or described herein are the sole property of IMPACT Drafting & Design, Inc. and no part may be reproduced, stored in a retrieval system, or transmitted in any form or by any means, electronic, mechanical, photocopying, recording, or by any information storage and retrieval system, without written consent from IMPACT Drafting & Design, Inc.

0/9
 Site Plan
 Lot 10