

The Adalyn

FIRST FLOOR = 1558 SQ. FT.
 BASEMENT = 1537 SQ. FT.
 TOTAL AREA = 3095 SQ. FT.



IMPACT
 DRAFTING & DESIGN, INC.
 DFC
 2110 Harnish Blvd., Ste. 2
 Billings, MT 59101
 www.impactdrafting.com 406-259-2110

GENERAL CONTRACTOR:
TRI MOUNTAIN HOMES
 JOHN ALT
 PO BOX 2207
 GILLETTE, WY 82717
 phone #: 307-670-8353
 PPKK@trimountainhomes.com
Impact Drafting & Design, Inc. is not responsible for any errors or omissions in these drawings. The user assumes all responsibility for any errors or omissions.



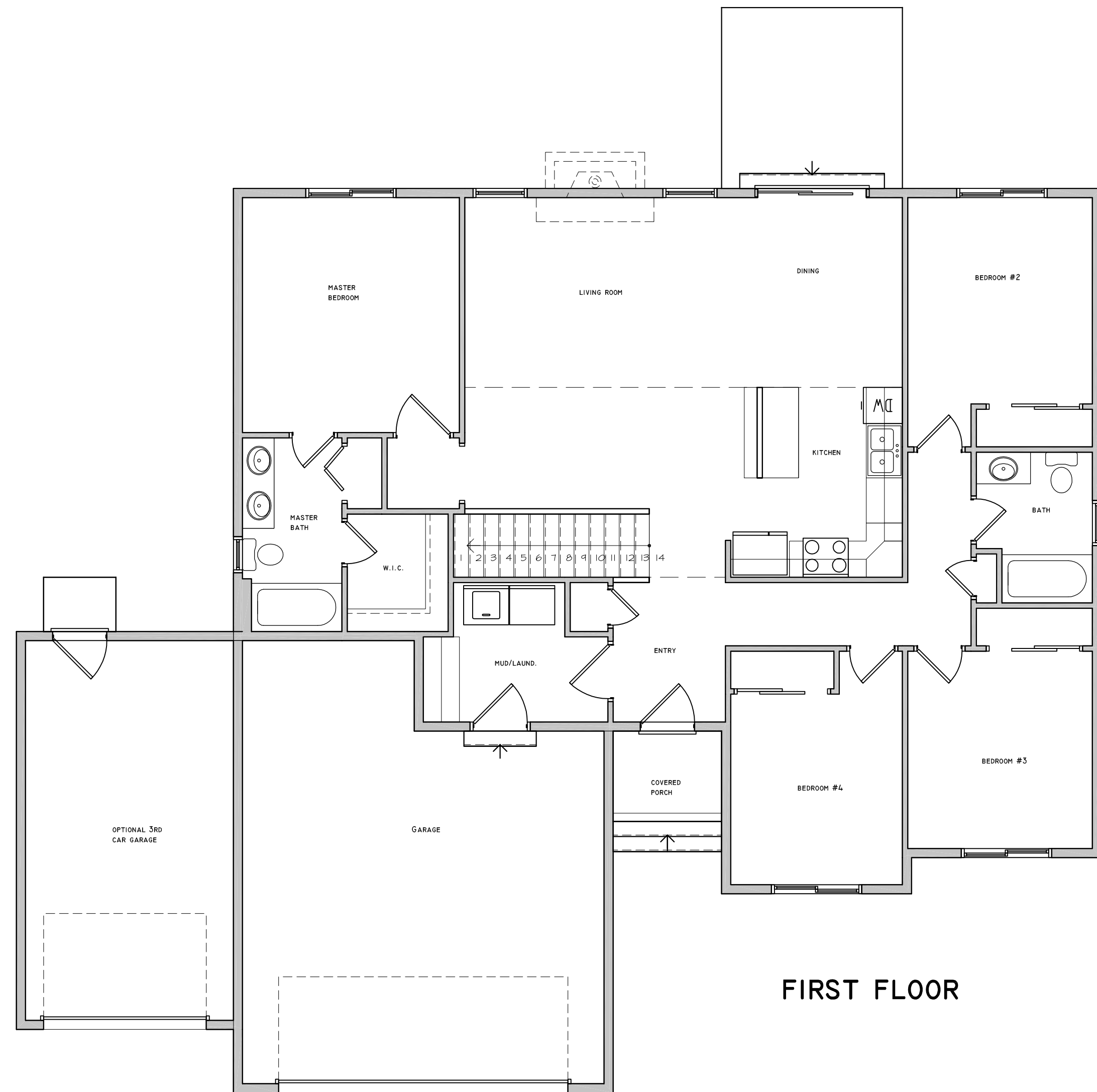
Project No. BL15-0521-I
 Scale: As Constructed, If Not Indicated
 by IMPACT Drafting
 Scale: 1" = 4'

The Adalyn
 GILLETTE, WY

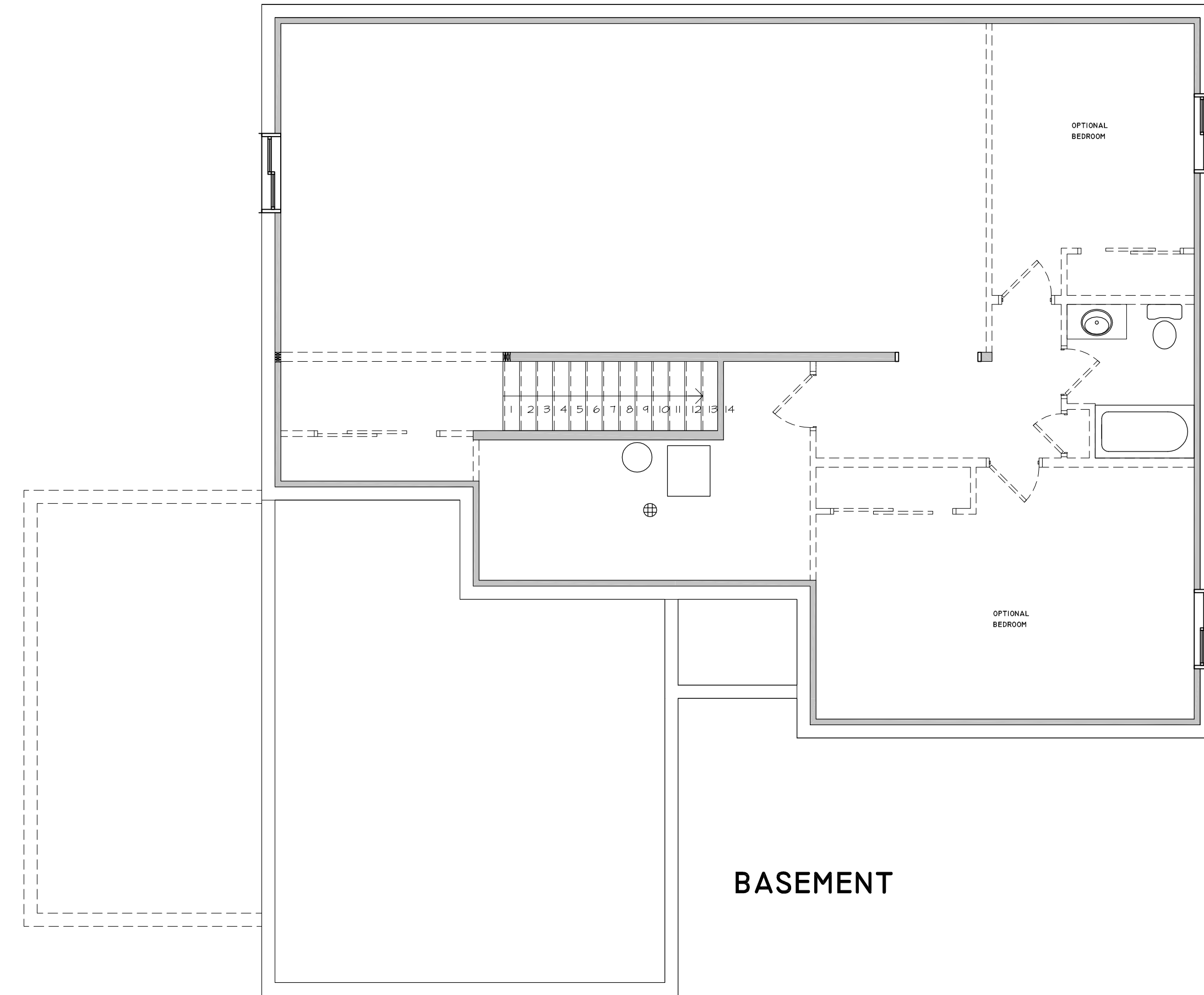
Drawn by: J. Graves
 Date: 29 May 15
 Revised by: J. Graves
 Date: 12 Jun 15
 J. Graves 26 Jun 15
 J. Graves 22 Jul 15

© 2015 IMPACT Drafting & Design, Inc.
 All rights reserved. All designs, drawings, plans, and written materials contained or described herein are the sole property of IMPACT Drafting & Design, Inc. and no part may be reproduced, stored in a retrieval system, or transmitted in any form or by any means, electronic, mechanical, photocopying, recording, or by any information storage and retrieval system, without written consent from IMPACT Drafting & Design, Inc.
 These drawings are licensed for ONE USER ONLY.

Site Plan
 Lot 10



FIRST FLOOR



BASEMENT